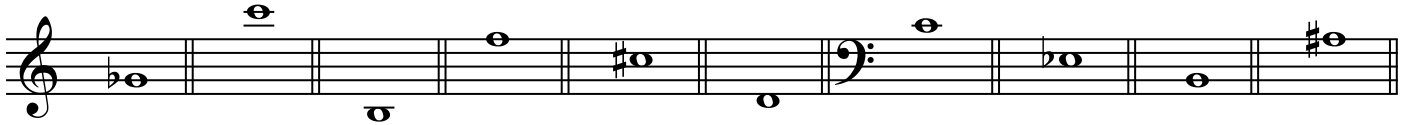


Name: _____
 Diagnostic Exam for Theory I

1. Identify note names on the treble and bass clefs.



2. Recognize, from the choices below, the names of the following major key signatures.



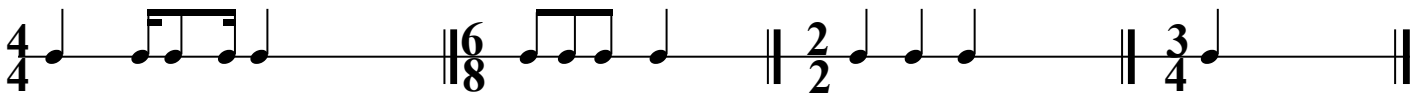
D Major, B Major, E Major, B \flat Major, A Major, A \flat Major, F Major

3. Identify the musical notation symbols from the multiple-choice.

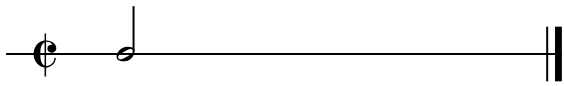

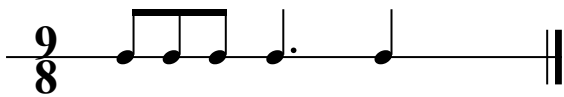

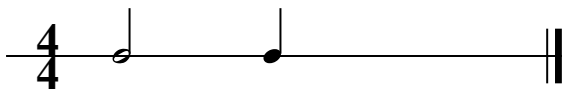






mezzo piano, piano, crescendo, staccato, fortissimo, decrescendo, accent, fermata, trill

4. Complete the measures choosing from the supplied single note values below.



5. Complete the measures choosing from the supplied single rest values on the right.

6. Recognize the half-and whole-steps on treble clef by writing under the staff: 1/2 for half step and 1 for whole step.

